

## TAMROSE VENTURES LIMITED

Lot 7 Okuru - Abuloma Link Road,  
By Emmanuel College Junction,  
Abuloma Port Harcourt.  
Rivers State, Nigeria.  
Tel: +234 703 603 5444  
Email: [contactus@tamroseventures.com](mailto:contactus@tamroseventures.com)



## TMC FALCON (HULL 326)

### VESSEL OVERVIEW

Vessel Type: Aluminium Monohull Fast Multi-Role Security Vessel  
Designed and built by Penguin Shipyard  
Classification: BV I, PHULL, MACH, Crow Boat/ Fast Patrol Boat, Sea Area 3  
Safety Regulation: BV and Panama Flag State requirements  
Regs, Codes, Guidelines: MARPOL, SOLAS, IMDG

### HULL PARTICULARS

Length Overall: 40.00 m  
Breadth Moulded: 7.60 m  
Depth Moulded: 3.65 m  
Loaded Draft: 1.89 m  
Bow Transfer Platform for Personnel: Fitted

### CARGO DECK

Clear Deck Area: 110 sqm  
Deck Cargo Capacity: 60 MT  
Deck Strength: 2.0 MT / sqm  
Deck Dimensions: 19.5 m x 5.6 m  
Cargo Railing Height: 1.0 m  
Deck Crane: Knuckle-boom crane, 500 kg @ 5.5 m outreach  
Deck Store: Fitted  
Remarks: Adequate cargo retainers and lashing lugs on both sides for securing deck cargo

### TONNAGE

GRT: 267 MT  
NRT: 80 MT  
DWT: 135 MT

### MAIN MACHINERY

Number of Main Engines: 3 units with resilient mountings  
Make/ Type: Caterpillar C32 ACERT IMO Tier 2  
Total BHP: 3 x 1450 BHP @ 2300 rpm  
Propellers: 3 x fixed pitch, Ni-Al Bronze, 5 blades  
Bow Thruster: 1 unit electro-hydraulic @ 100 HP

### PERFORMANCE

Maximum Speed: 28 knots @ 100% MCR  
Maximum Speed Fuel Consumption: 878 L/hr  
Economic Speed: 26 knots @ 85% MCR  
Economic Speed Fuel Consumption: 765 L/hr

### GENERATORS AND AUXILIARY ENGINES

Generators: 3 x Caterpillar SF4 Alternator 86 kW  
Prime Movers: 3 x 125 BHP @ 1500 rpm  
Make/ Type: Caterpillar C4.4  
Vessel Power Supply: 415/220 Volt AC, 50 Hz, 3-phase + 24 Volt DC  
Shore Power / Reelers Sockets: 1 / 4

### SAFETY EQUIPMENT

Life Rafts: 2 x 25-man each side as per SOLAS  
Life Jackets: 53 on board as per SOLAS  
Life Buoys: 8 on board as per SOLAS  
Scrambling Nets: 2 units  
Other Equipment: Pyrotechnics, line-throwing apparatus  
Rescue Zone: Port and Starboard

### EMERGENCY RESPONSE FEATURES

1 x external FIFI monitor with remote clutch and control @ 600 cbm per hour  
Aerosol fire extinguishing system  
Motorised workboat

### ACCOMMODATION AND STORAGE

**MAIN DECK**  
Passenger Seats: Economy Class 30 pax  
Passenger Toilets: 2 cubicles with showers  
Entertainment System: 2 x LCD TV screens  
Security Personnel Cabins / Total Bunks: 4 / 10  
(2 x 4-man, 2 x 1-man)  
Security Personnel Shower Rooms: 2 cubicles

### BELOW MAIN DECK

Crow Cabins / Total Bunks: 4 / 8  
(1 x 4-man, 1 x 2man, 2 x 1-man)  
Crow Toilet: 1 cubicle with shower  
Entertainment System: 1 x LCD TV screen  
Crow Mess and Galley: Fitted  
Crow Washer and Dryer: Fitted  
Separate Walk-In Freezer and Chiller: Fitted  
Dry Store: Fitted  
Work Bench: Fitted

### ELECTRONICS AND CONTROLS

GMDSS: Sea Area A1+A2  
VHF: FM-8900S  
MF/HF Radio: FS 1575  
BNWAS: LeGuardian2025  
Marine Radar: Furuno FR-8065  
GPS: Furuno GP-39  
Depth / Echo Sounder: Furuno FCV-688  
Gyro Compass: Simrad RGC50  
Magnetic Compass: Riviera 6"  
Navtex: JMC NT1800  
Public Address / Intercom System: Vingtor ETB-100  
Search Lights: 3 x 1000W  
EPIRB: McMurdo E5  
(406MHz & 121.5MHz)  
McMurdo S4  
AIS: Furuno FA-170  
Fleet Broadband: FBI 500  
CCTV: 9 units fitted  
(5 x Exterior, 1 x Passenger Area, 2 x Engine Room, 1 x Bridge)

### TANK CAPACITIES

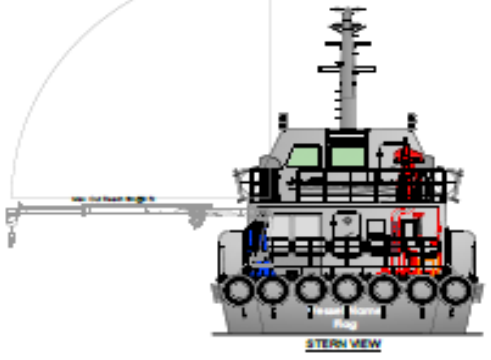
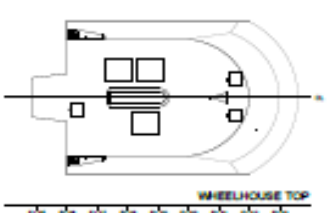
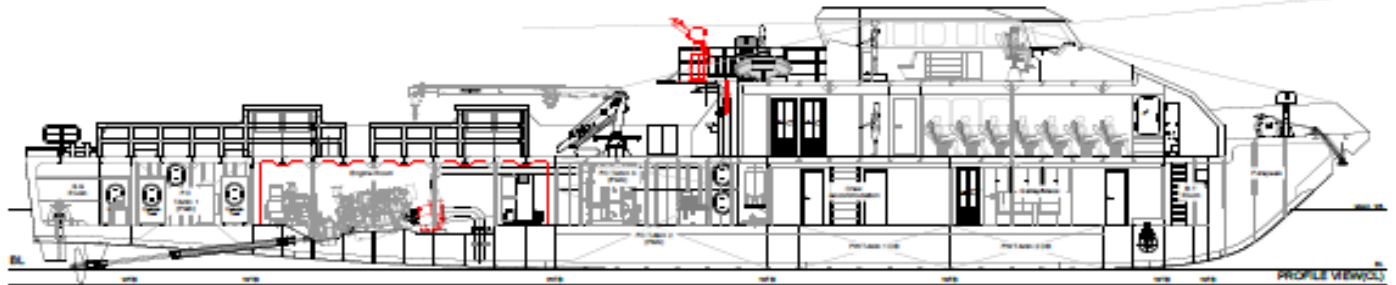
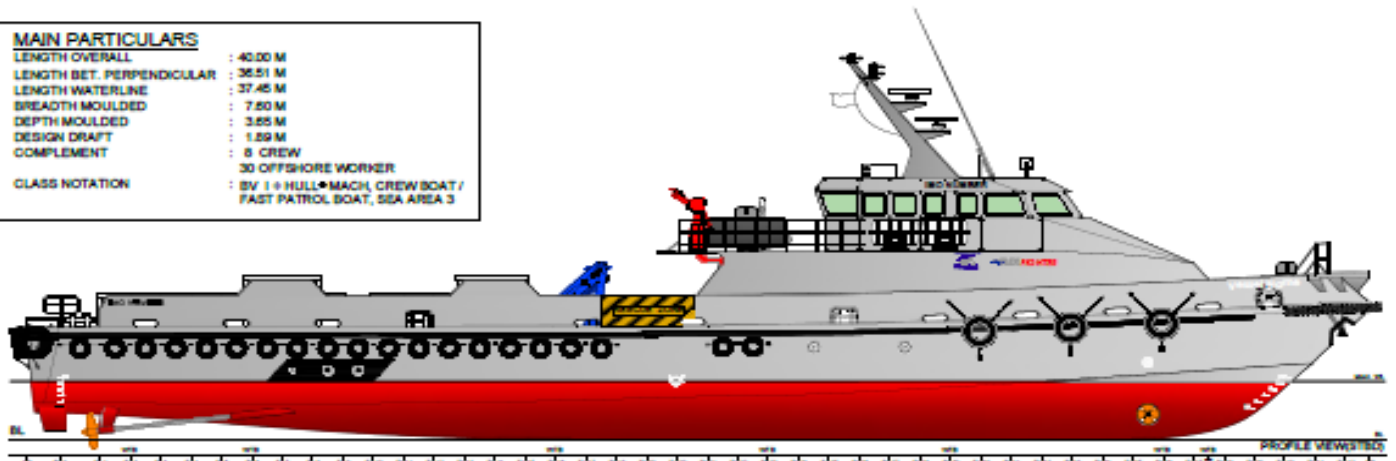
Fuel Oil: 93,000 L  
Fresh Water: 30,000 L  
Fresh Water Maker: 3.4 ton/day  
Oily Bilge: 600 L  
Lube Oil: 450 L  
Gear Oil: 450 L  
Hydraulic Oil: 450 L  
Fuel Oil Sludge: 500 L  
Fuel Oil Purifier: Heavy duty, self-cleaning unit  
IMO-Approved Sewage Treatment Plant: Fitted for 15 pax  
IMO-Approved Oily Water Separator: 15 ppm

### FLEX FIGHTER FEATURES

Night vision camera: Fitted  
All-Round Wheelhouse Ballistic Protection:  
- Wheelhouse Windows (STANAG L1)  
- Wheelhouse Panels (STANAG L1) up to ceiling height  
- Wheelhouse Weather-tight Door (STANAG L1)  
Gun Mounts with Ballistic Shields (1 x forward and 2 x aft)  
\* Weapons not included

**MAIN PARTICULARS**

LENGTH OVERALL : 40.00 M  
 LENGTH BET. PERPENDICULAR : 36.51 M  
 LENGTH WATERLINE : 37.45 M  
 BREADTH MOULDED : 7.60 M  
 DEPTH MOULDED : 3.65 M  
 DESIGN DRAFT : 1.92 M  
 CREW : 9  
 COMPLEMENT : 30 OFFSHORE WORKER  
 CLASS NOTATION : BV 1 + HULL \* MACH, CREW BOAT / FAST PATROL BOAT, SEA AREA 3



Rev	01-10-2018	ISSN	KJK	YJH	Main deck layout revised as per Owner requirement
Rev	Date	Drawn	Checked	Approved	Description
<b>PENGUIN SHIPYARD INTERNATIONAL PTE LTD</b> 18 Tuas Basin Link, Singapore 630764, www.penguin.com.sg					
All drawings and information contained herein are the property of the undersigned and shall remain confidential. Any use of this information without the written consent of the undersigned is strictly prohibited.					
Project: Flex Fighter (H325, H326)					
Title: General Arrangement					
Drawn	ISSN	Date	25-07-2018	Rev. Type	Arrangement
Checked	KJK	Date	25-07-2018	Rev. Status	Released
Approved	YJH	Date	25-07-2018	Sheet	Hull No: H325
File Type: FLEX-600LC				Drawing No:	PSI-H325-601-01
				Scale:	1:50
				Sheet:	1 of 1
				Revision:	B