



TMC PROVIDENCE

DPII FiFi1 UT755LN PLATFORM SUPPLY VESSEL

Class Notation	BV + 1A1 Fire Fighter (I +) BIS CLEAN DYNPOS (AUTR) EO HL(2.5) SF TMON
Place/Year of build	Cochin Shipyard / 2010
Flag	Nigeria
IMO	9444352
Owners & Manager	Tamrose Limited

**MAIN PARTICULARS**

LOA	73.6 m
Length BP	68.3 m
Breadth Moulded	16.0 m
Depth Moulded	7.0m
Max Loaded Draft	5.83 m
Deadweight	3217 T
Deck Capacity	1600 T
Deck Area	708 sqm
GRT	2177 T
NRT	1044 T

PERFORMANCE

Trial Speed / Max	13 knots (16T / 24hrs)
Cruising Speed	11 knots (12.5T / 24hrs)
Economical Speed	10 knots (8T / 24hrs)

CAPACITIES

Dry Bulk	320.1 m ³ (5 tanks)
Potable / Fresh Water	918.5 m ³ (9 tanks)
Drill / Ballast Water	1279.8 m ³ (11 tanks)
Brine / Mud	997.7 m ³ (10 tanks)
Brine (Dedicated)	398.9 m ³ (4 tanks)
Base Oil	204.5 m ³ (2 tanks)
Fuel Oil	956.1 m ³ (9 tanks)

DECK EQUIPMENT

Capstans	2 x 8 T
Tugger Winch	2 x 10 T
Deck Crane	1 x 3 MT @ 16 m

DISCHARGE

Dry Bulk	60 m ³ /hr @ 5.6hr
Fresh Water	1 x 200m ³ /hr @ 9 bar
Drill / Ballast Water	2 x 200m ³ /hr @ 9 bar
Brine / Mud	2 x 75m ³ /hr @ 18 bar
Base Oil	1 x 150m ³ @ 9 bar
Fuel Oil	1 x 200m ³ @ 9 bar

PROPULSION AND MACHINERY

Main Engines	2 x 2688 BHP/2005 kW
Total Main Engines	5376 BHP / 4010 kW
Main Engine	2 x Rolls Royce Bergen
Propellers	2 x CPP

THRUSTER

Bow 1	1 x 630 kW / 845 BHP
Bow 2	1 x 630 kW / 845 BHP
Stern 1	1 x 500 kW / 670 BHP
Stern 2	1 x 500 kW / 670 BHP
(All four Tunnel Thrusters)	

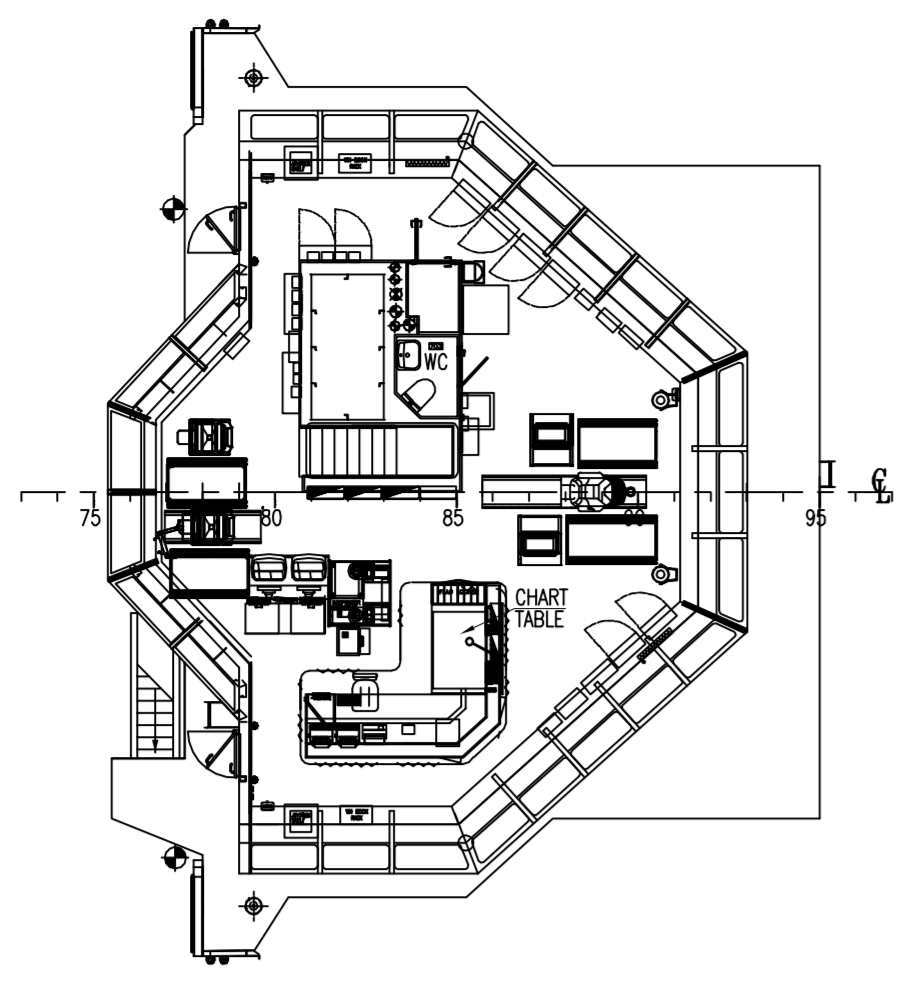
AUXILIARY ENGINE

Shaft Generator	2 x 1440 kW (2 x 1800 kVA)
Diesel Generator	2 x 250 kW (2 x 312 kVA)
Emergency Generator	1 x 76 kW (95 kVA)
Supply System - Voltage	440V, 60Hz

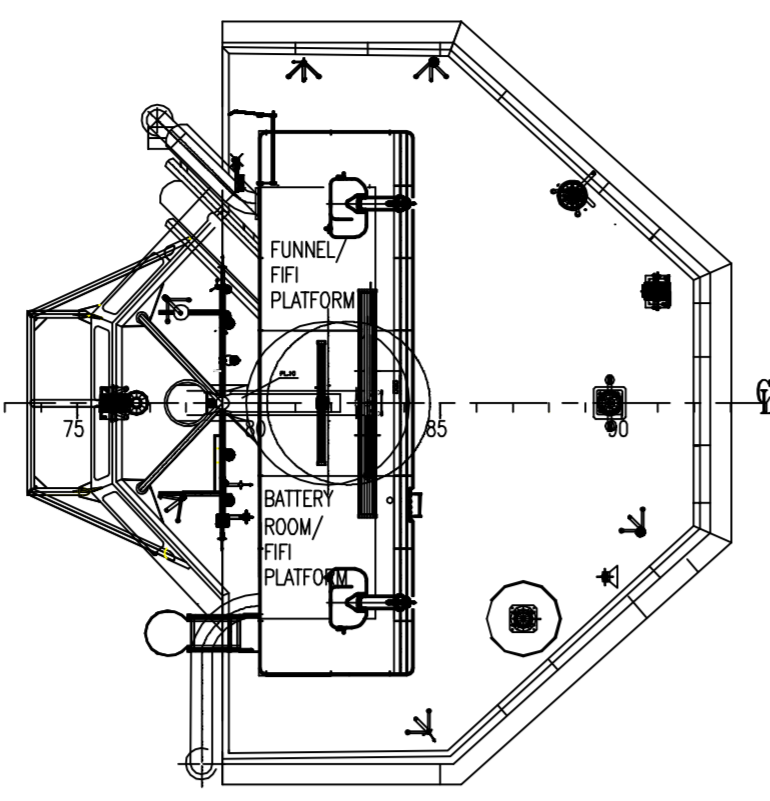
ACCOMMODATION

1 Man Cabins x 7	7
2 Man Cabins x 7	14
4 Man Cabins x 2	8
Total	29 Berths
Hospital	Yes

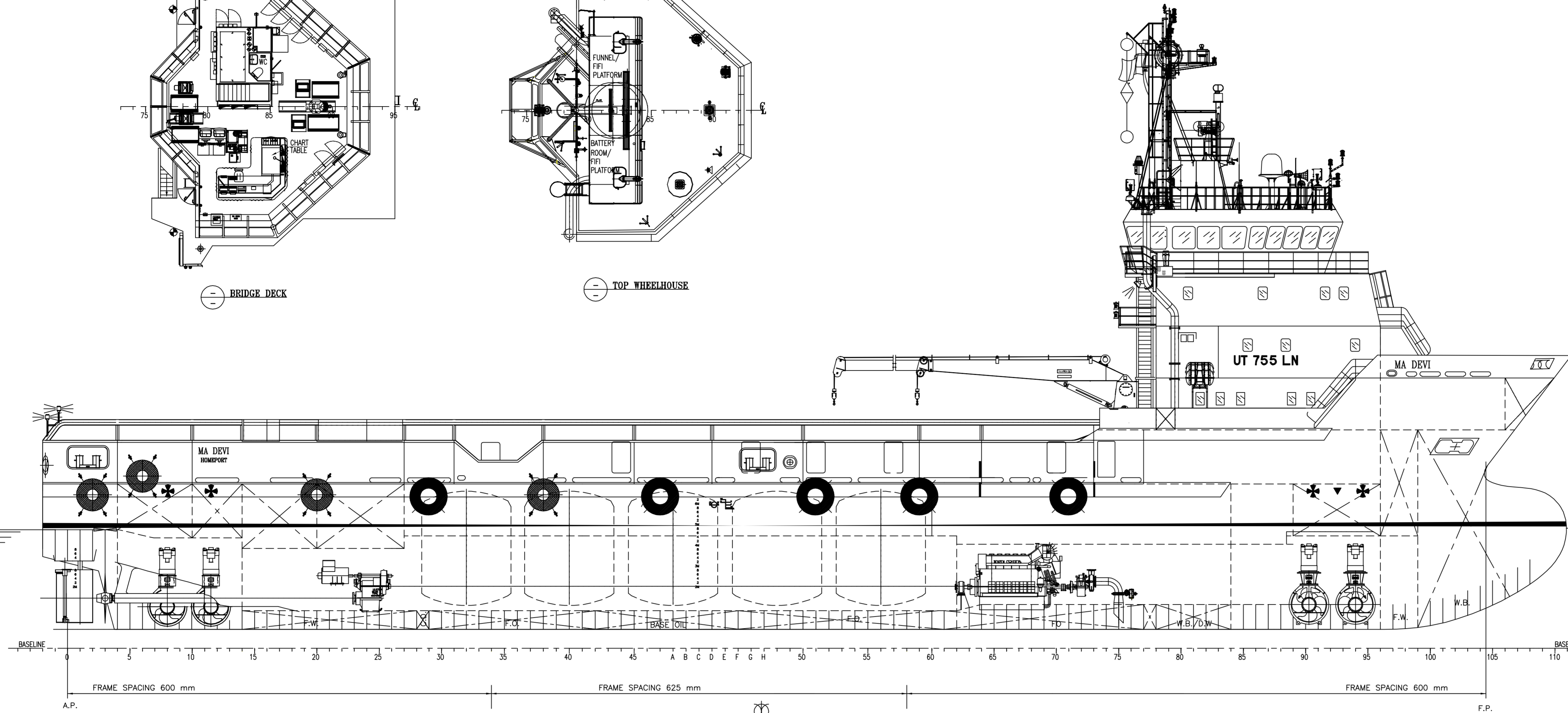
GENERAL ARRANGEMENT PLAN - TMC PROVIDENCE



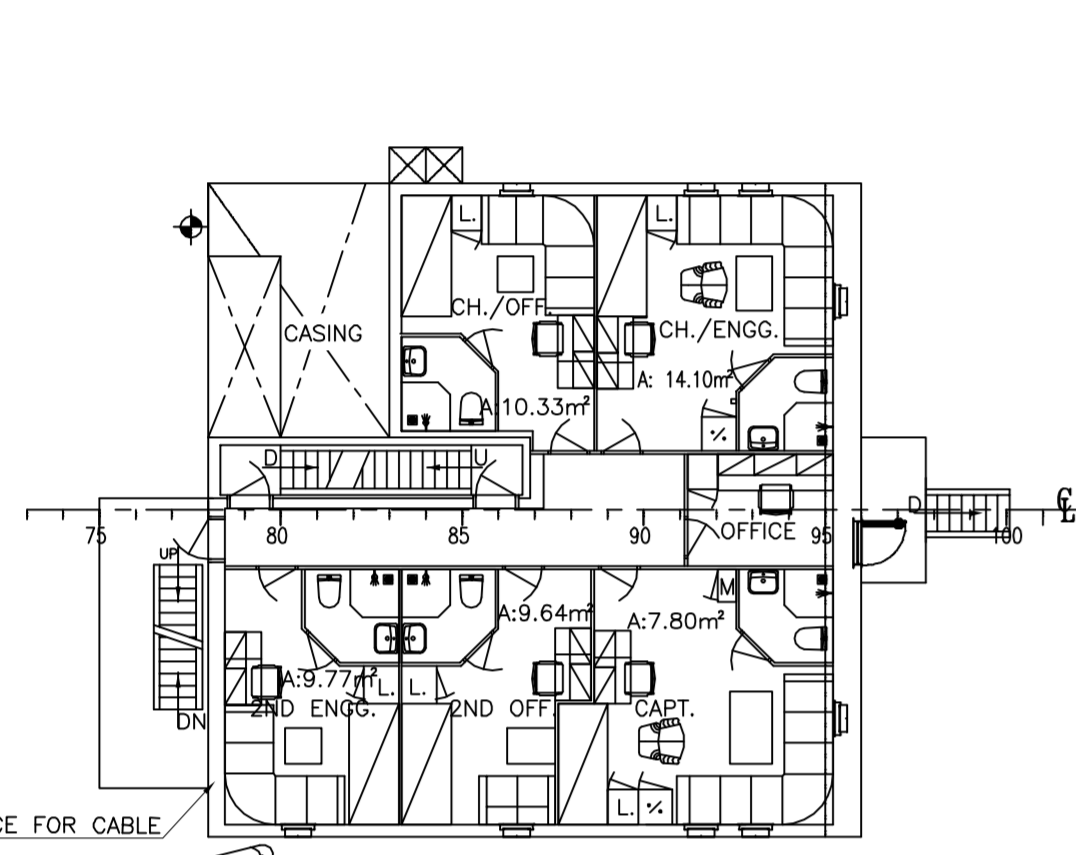
BRIDGE DECK



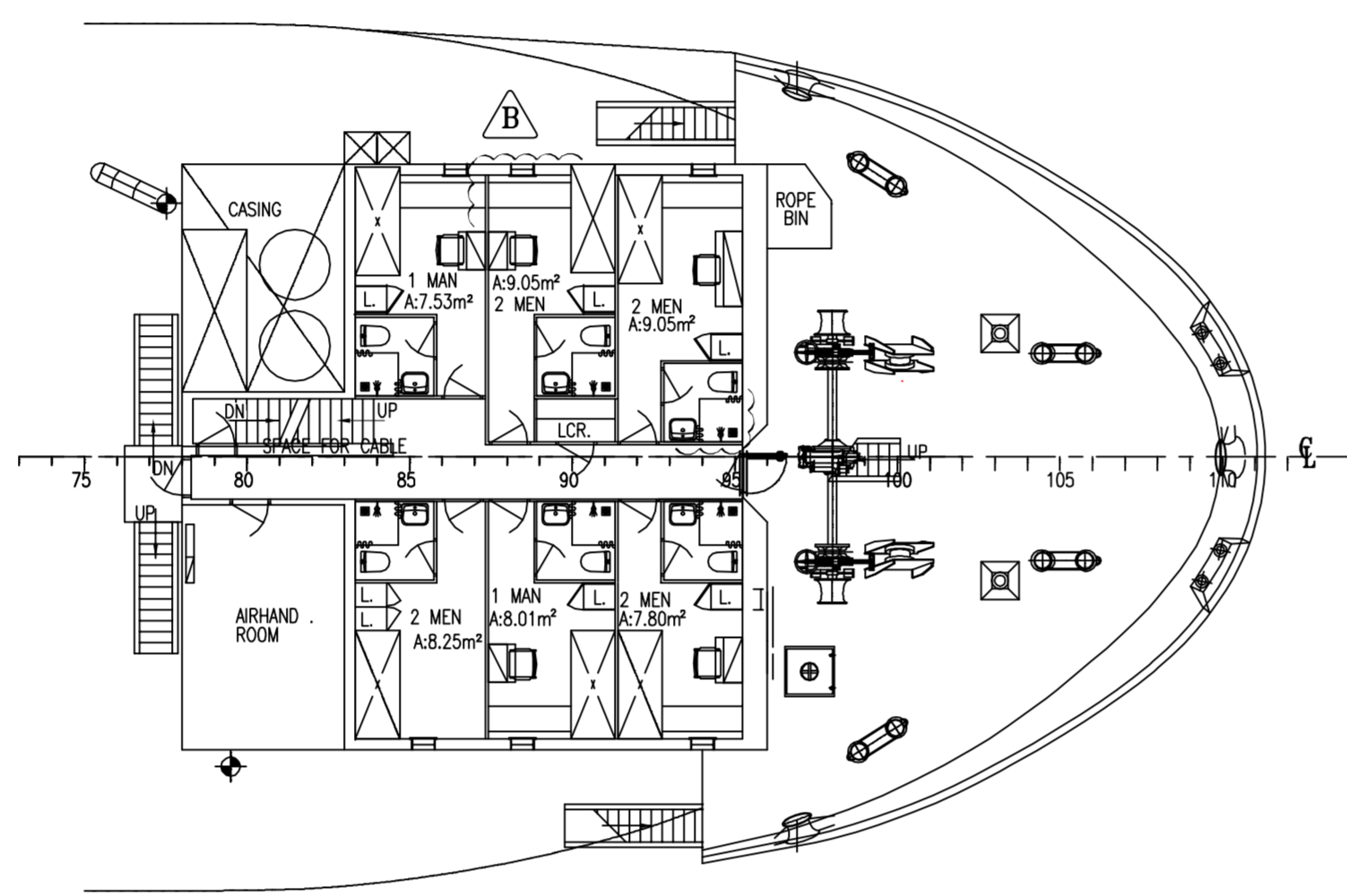
TOP WHEELHOUSE



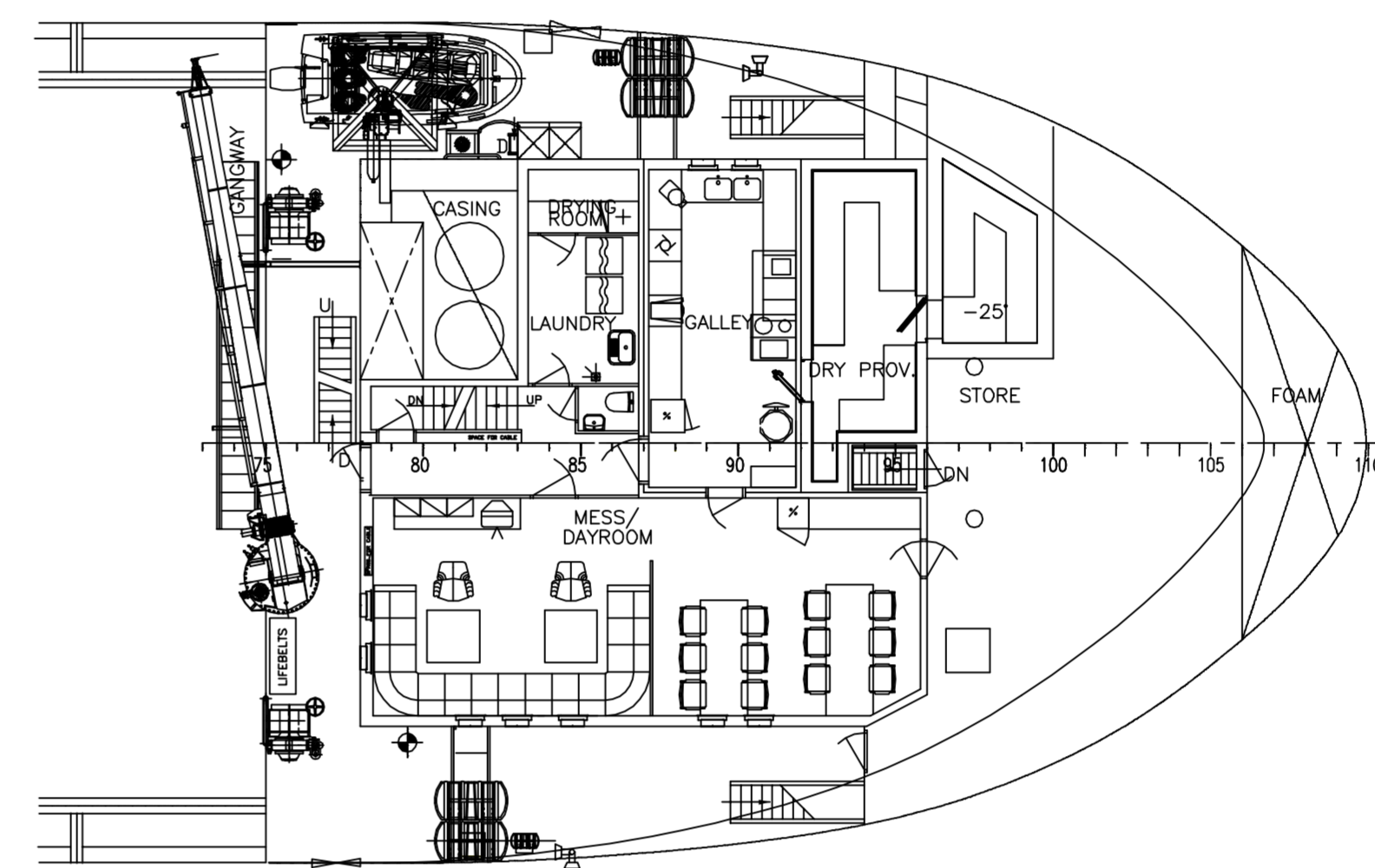
PROFILE



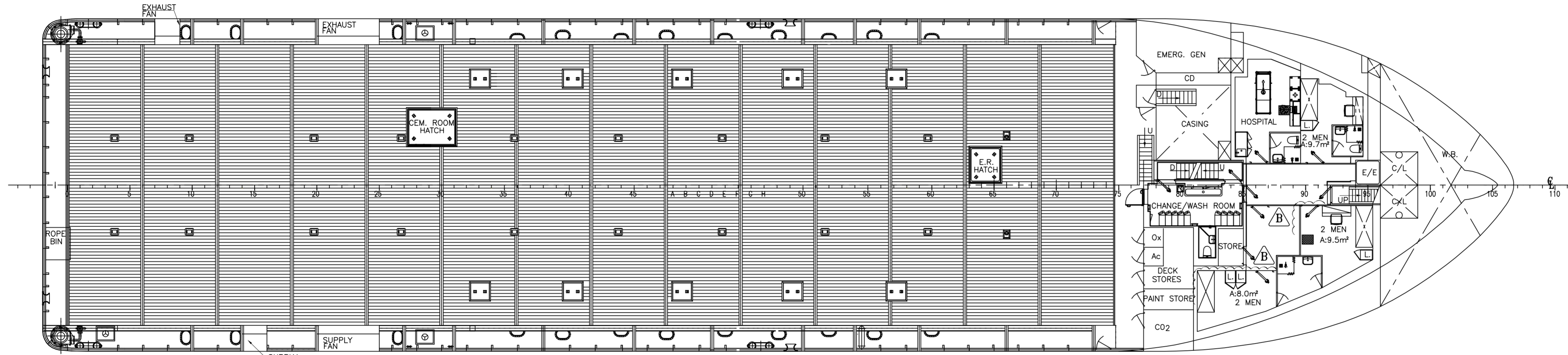
B DECK
MN : 15 = 5



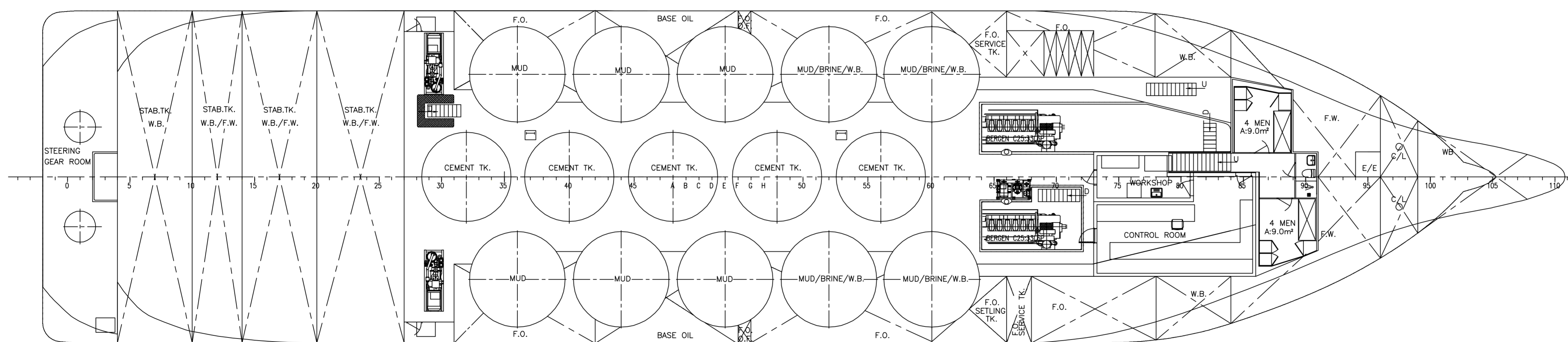
A DECK
1 MN : 102 = 2
2 MN : 24 = 8



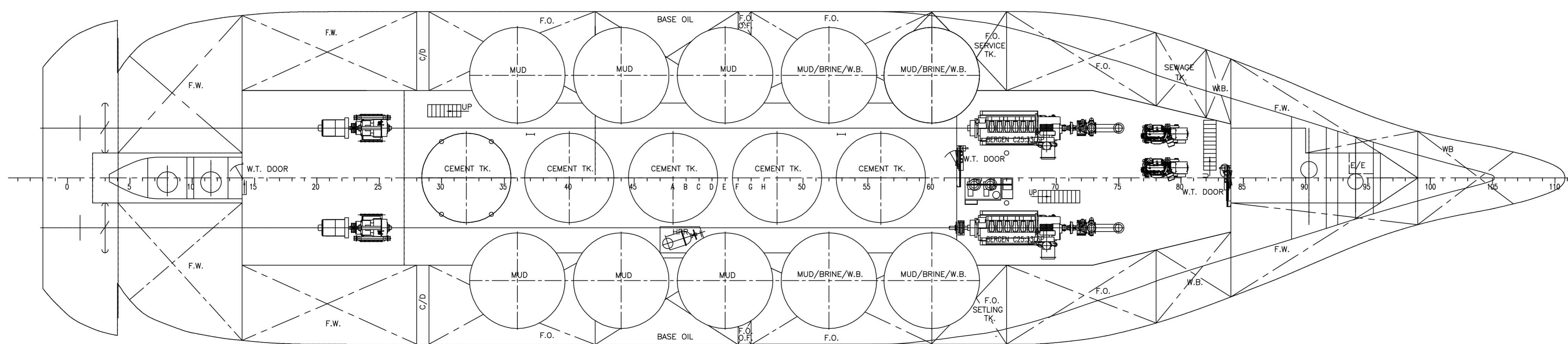
FORECASTLE DECK



MAIN DECK
2 MN : 243 = 6



TWEEN DECK
4 MN : 42 = 4



TANK TOP

REFERENCE DWG.
01.067142-101-001_GENERAL ARRANGEMENT

PRINCIPAL PARTICULARS	
LENGTH (O.A.)	: 73.60 m
LENGTH (R.P.)	: 68.30 m
BREADTH (MLD.)	: 16.00 m
DEPTH (MLD.)	: 7.00 m
DESIGNED DRAUGHT	: 5.00 m
MAX. DRAUGHT	: 5.63 m
MAIN ENGINE	: 2000KW@ 1000 RPM
COMPLIMENT	: 29 PERSONS
CLASS: DNV +I1, SF, EO, DYNPOS	
AUTR, Fire-Fighter1, CLEAN	

MA DEVI					
35707	C	18.06.18	REVISED AS PER NEW MODIFICATION	W	DD
35671	B	14.06.18	REVISED AS PER NEW MODIFICATION	SNU	DD
35605	A	14.06.18	INITIAL ISSUE	-	DD
UID	REV	DATE	DESCRIPTION	REVISIONS	REVISED BY APPROVED

ARIES MARINE & ENGG. SERVICES
#22-03A, INTERNATIONAL PLAZA
15 ANSON ROAD, SINGAPORE 079903
Tel: +65 6220 9056, Fax: +65 6220 9057
Website: www.ariesgroup.co, Email: design@ariesgroup.co

This drawing, design concept, and specifications are the property of ARIES MARINE & ENGG. SERVICES and are furnished on a confidential basis with an expressed understanding that they are not to be copied in any manner, used for manufacture, with or without, or used in the operation of any other vessel without written permission. The recipient further agrees not to disclose the contents hereof to any other parties except for those specific purposes for which this drawing was issued.

TITLE:
GENERAL ARRANGEMENT PLAN

VESSEL NAME : MA DEVI	DATE : 18.06.18	DWG. No : 001746/2001
DRAWN BY : JCU	JOB No : 001746	SHEET : 01 OF 01
CHECKED BY : NN	SCALE : 1:125	REV : -C SIZE : A0